



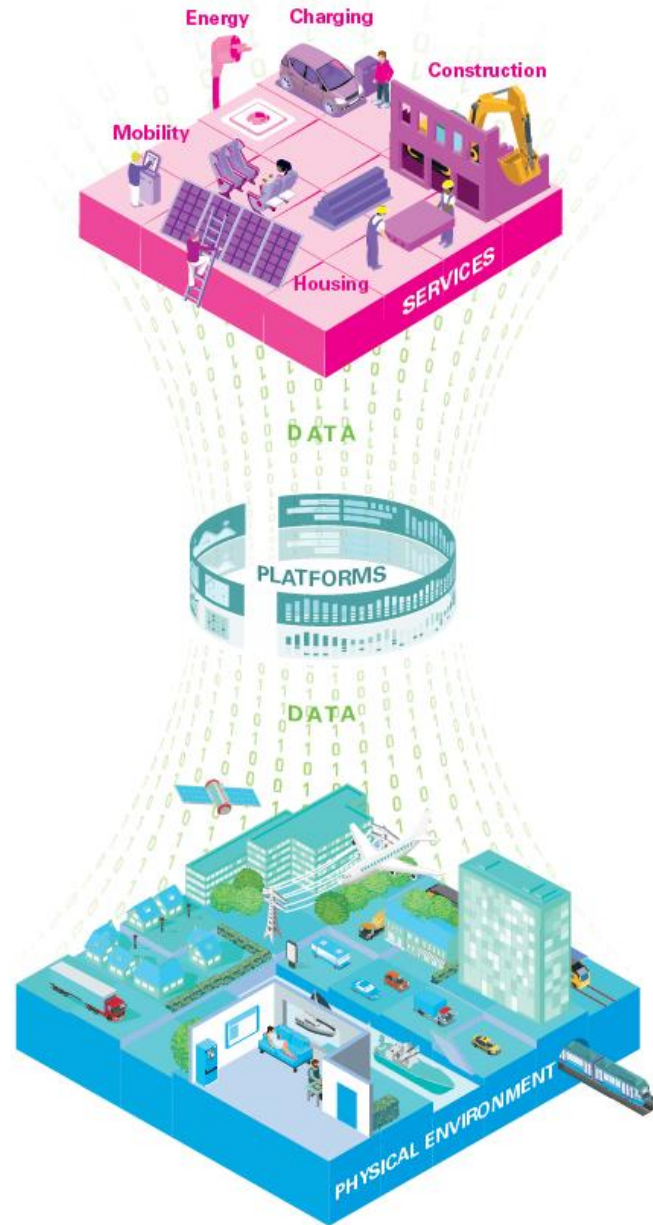
Rli

Council
for the Environment
and Infrastructure



www.rli.nl





6 Set requirements on how service providers and parties rendering performance handle the data they collect and promote sustainable digital developments.

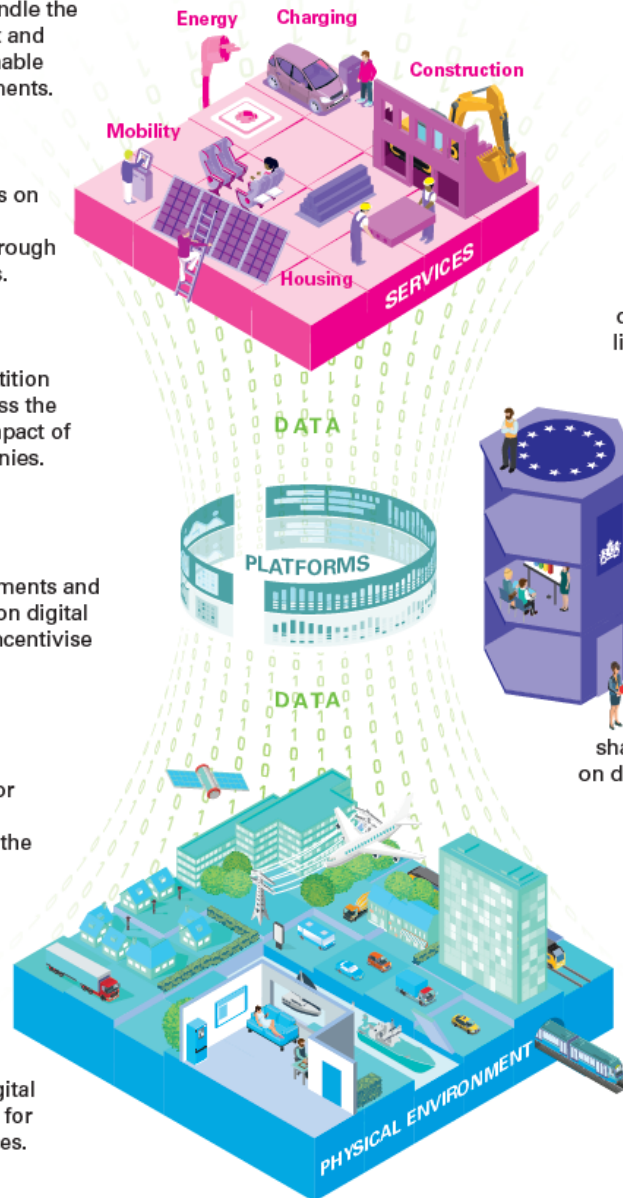
5 Conduct experiments on 'setting off' sustainability through digital platforms.

4 Use competition law to assess the sustainability impact of platform companies.

3 Set requirements and conditions on digital platforms that incentivise sustainability.

2 Ensure that standards are developed for the handling of data relevant to the sustainability of society.

1 Promote digital alternatives for polluting activities.



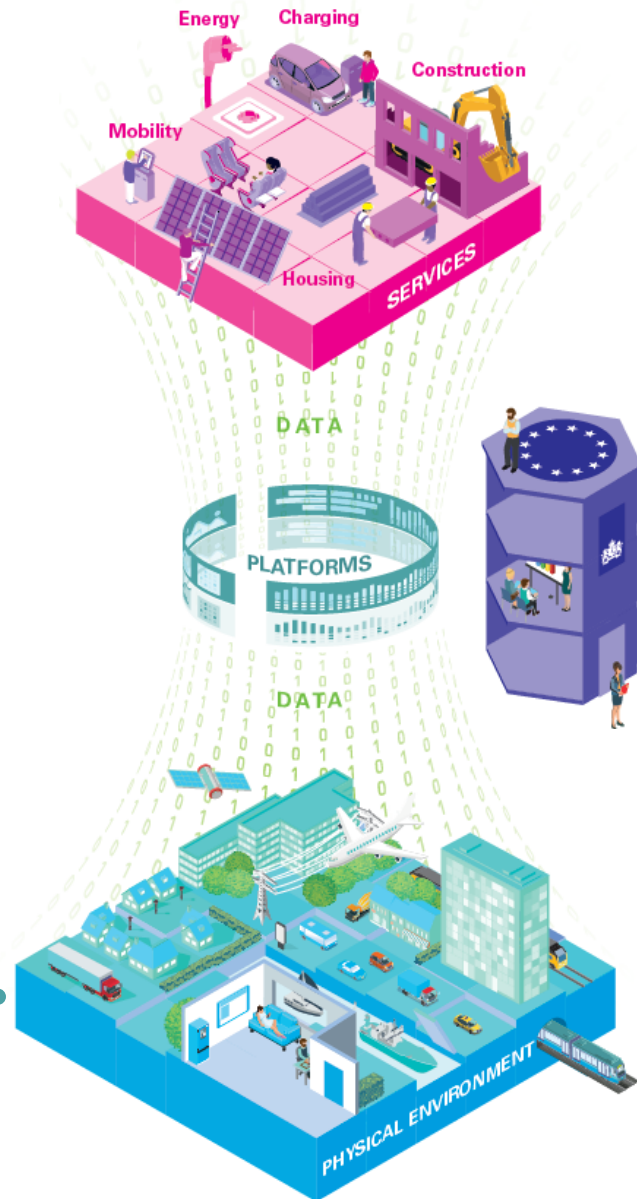
GOVERNMENT ORGANISATION

Ensure robust monitoring of digitalisation in the living environment. **9**

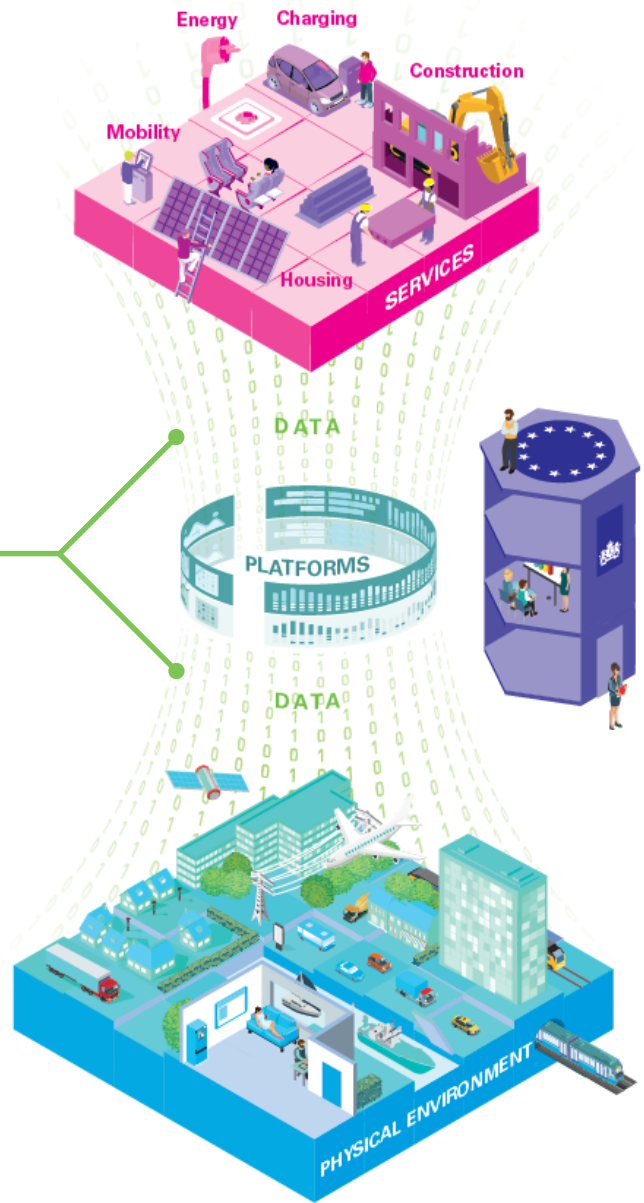
Develop working methods to enable the organisation to respond rapidly to digital developments with policy and regulations. **8**

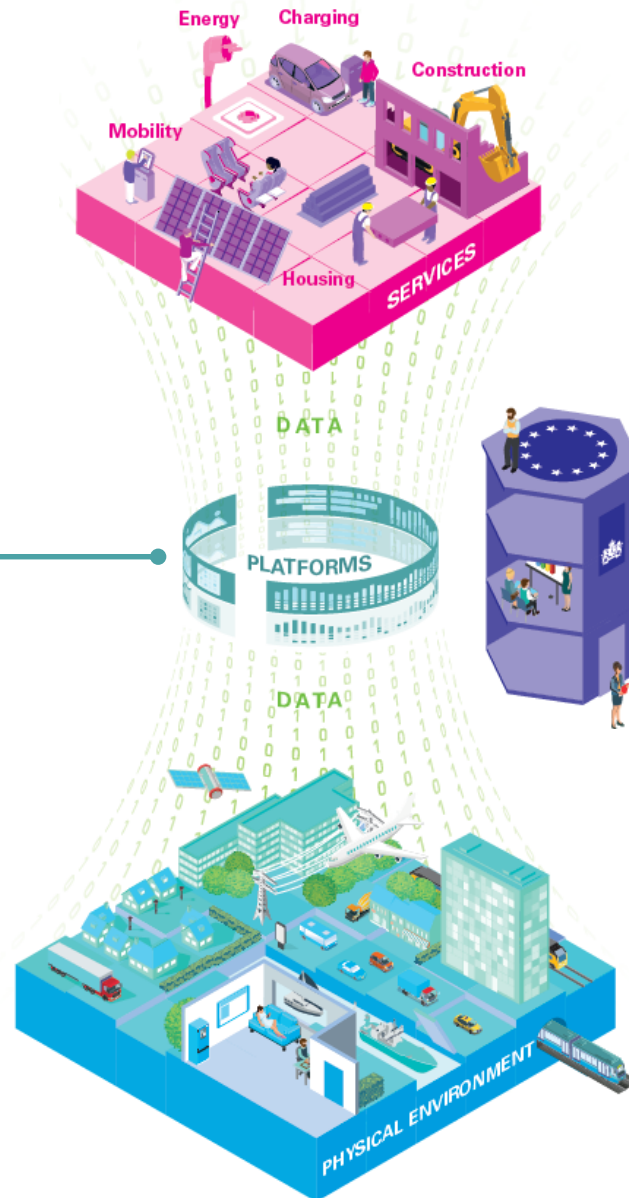
Develop shared expertise on digitalisation within governmental institutions. **7**

Promote digital alternatives for polluting activities

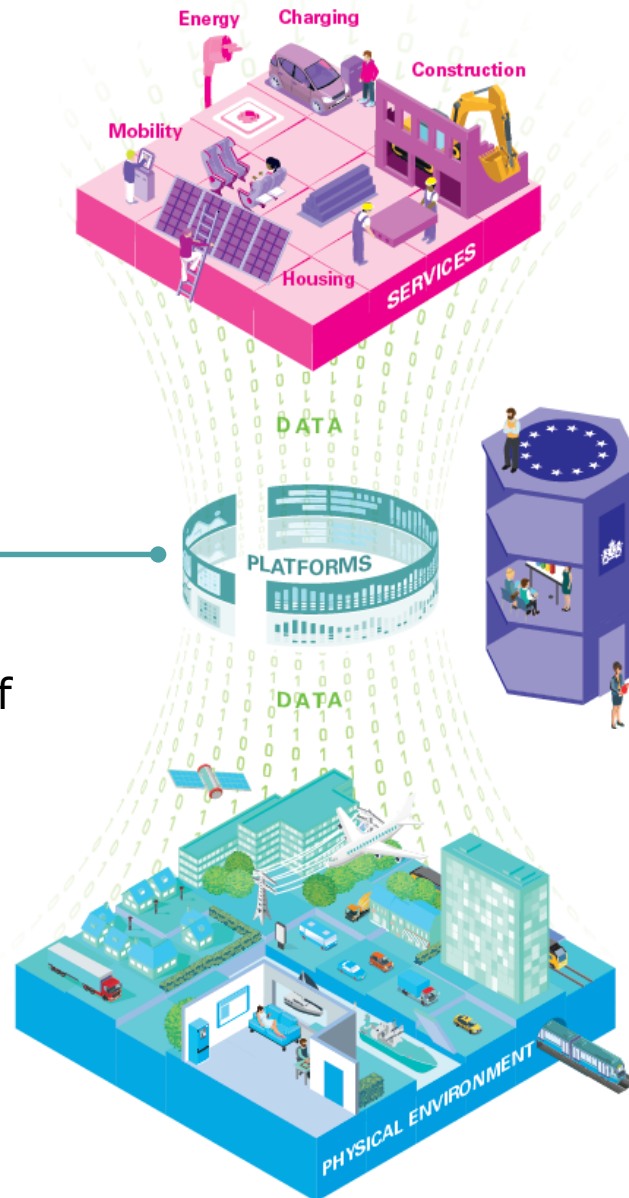


Ensure that standards are developed for the handling of data relevant to the sustainability of society

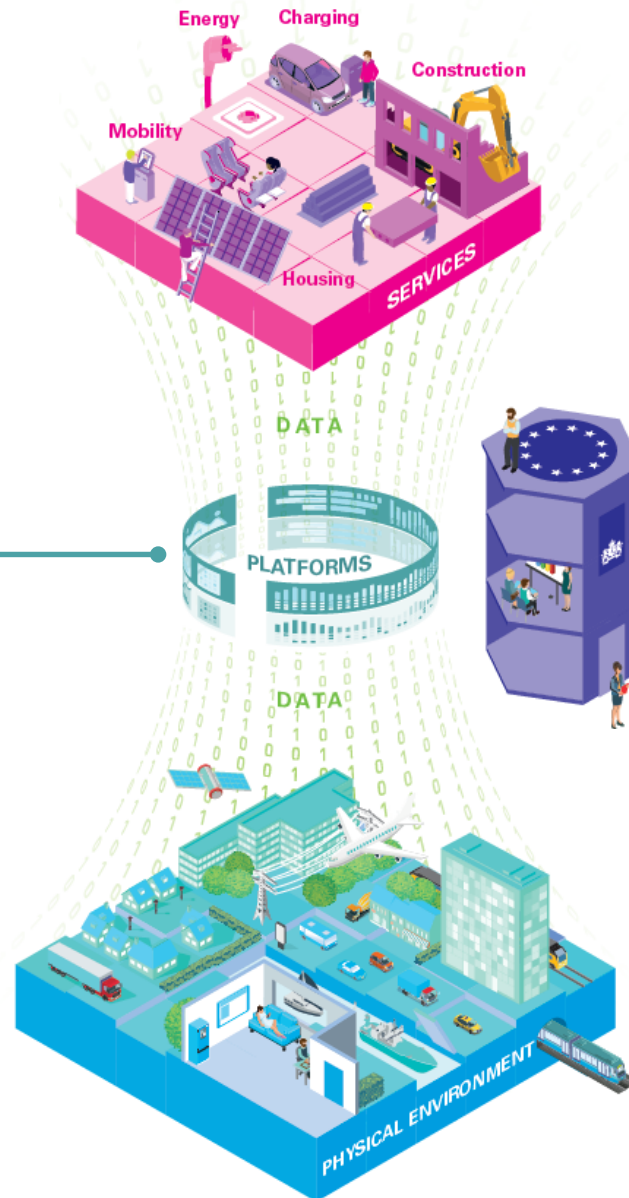




Set requirements and conditions on digital platforms that incentivise sustainability

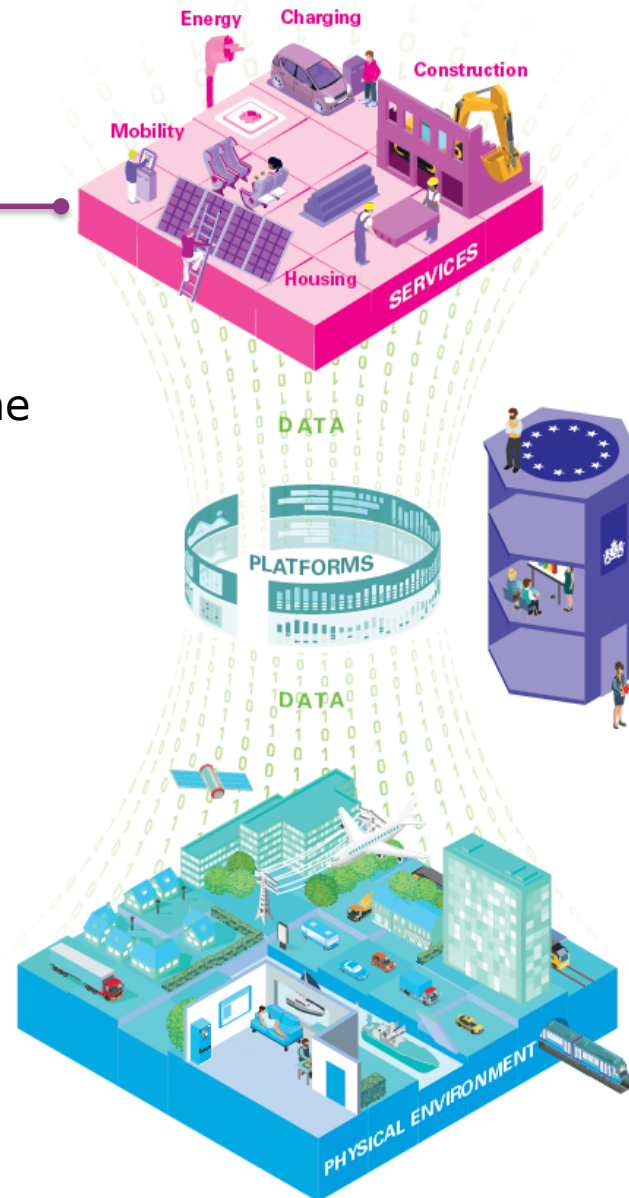


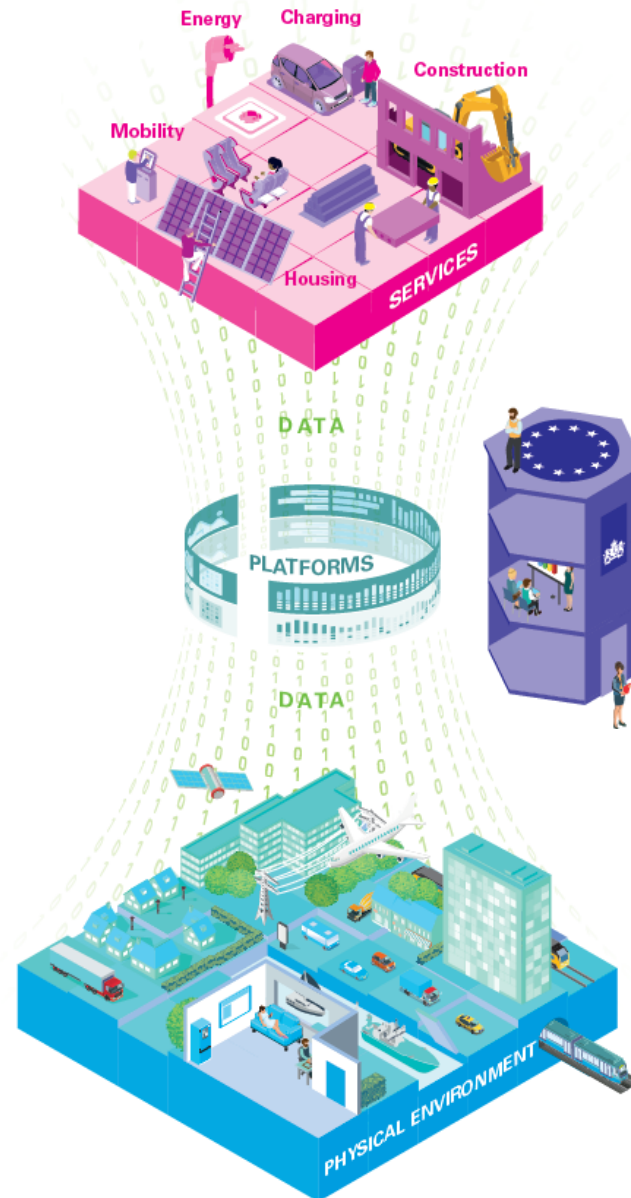
Use competition law to assess the sustainability impact of platform companies



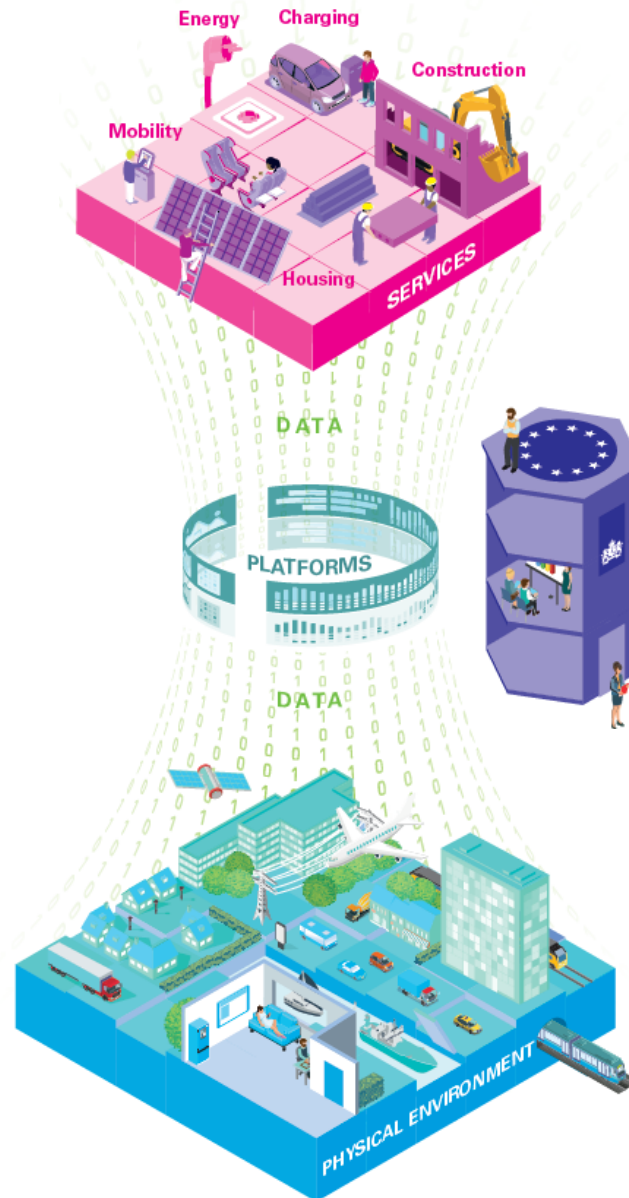
Conduct experiments on 'setting off' sustainability through digital platforms

Set requirements on how service providers and parties rendering performance handle the data they collect and promote sustainable digital developments

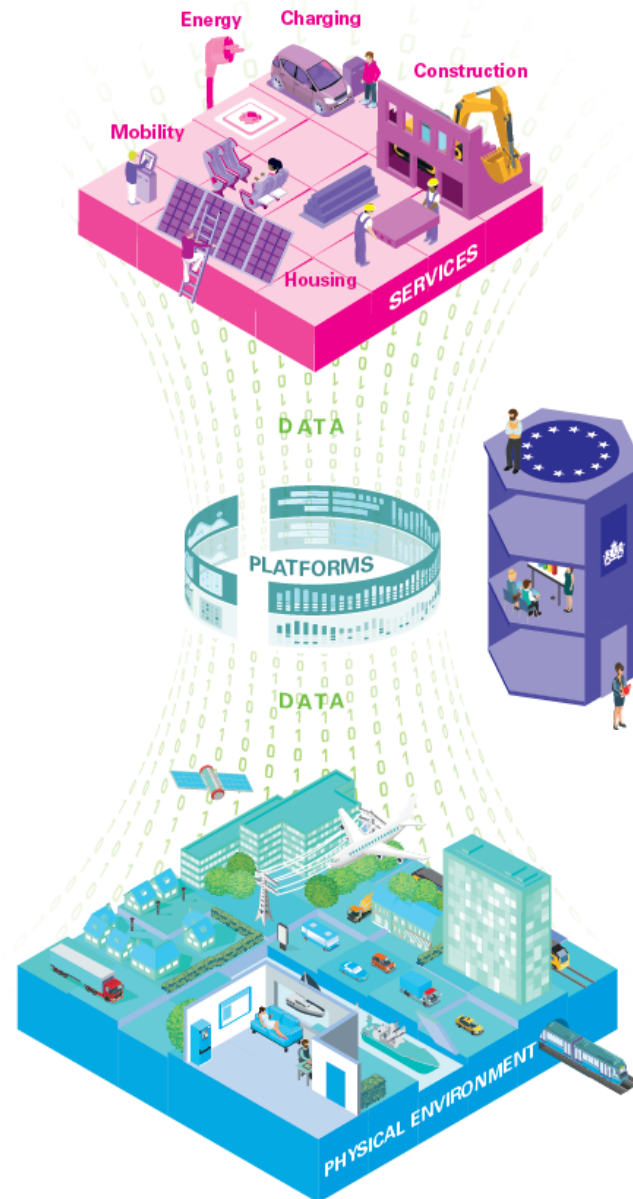




Ensure robust monitoring of digitalisation in the living environment



Develop working methods to enable the organisation to respond rapidly to digital developments with policy and regulations



Develop shared expertise on digitalisation within governmental institutions



Rli

Council
for the Environment
and Infrastructure



www.rli.nl